

Table 8.2.2.4
Minimum Design Parameters for Level 1 (iii) Roads
 (Single Carriageway of 50km/h)

Design Parameter	Type A >12 hours	Type B <12 hours	Type C <15 mins
Advance Warning Signage			
Sign Size (mm)	600	600	-
Sign visibility (m)	50	50	50
Number of Signs	2	2	-
Cumulative Distance (m)	40	40	-
Distance between Advance Warning Signs (m)	20	20	-
Taper			
Lane Taper Rate ^A	1 in 5	1 in 5	-
Hard Shoulder Taper Rate ^A			-
Cones			
Cone height (mm)	750	750	-
Taper Spacing (m) ^B	3	3	-
Longitudinal Spacing (m) ^B	3	3	-
Lamps (unit areas only)			
Taper Spacing (m)	6	6	-
Longitudinal Spacing (m)	6	6	-
Safety Zones			
Longitudinal (m)	5	5	-
Lateral (m)	0.5	0.5	-
Lanes			
Lane Width (m) ^C	3 (2.5)	3 (2.5)	-
Two-way Roadway Width (m)	5	5	-

23 101-02 003 RS
WORKS ZONE
SECTION 02




BARRIER

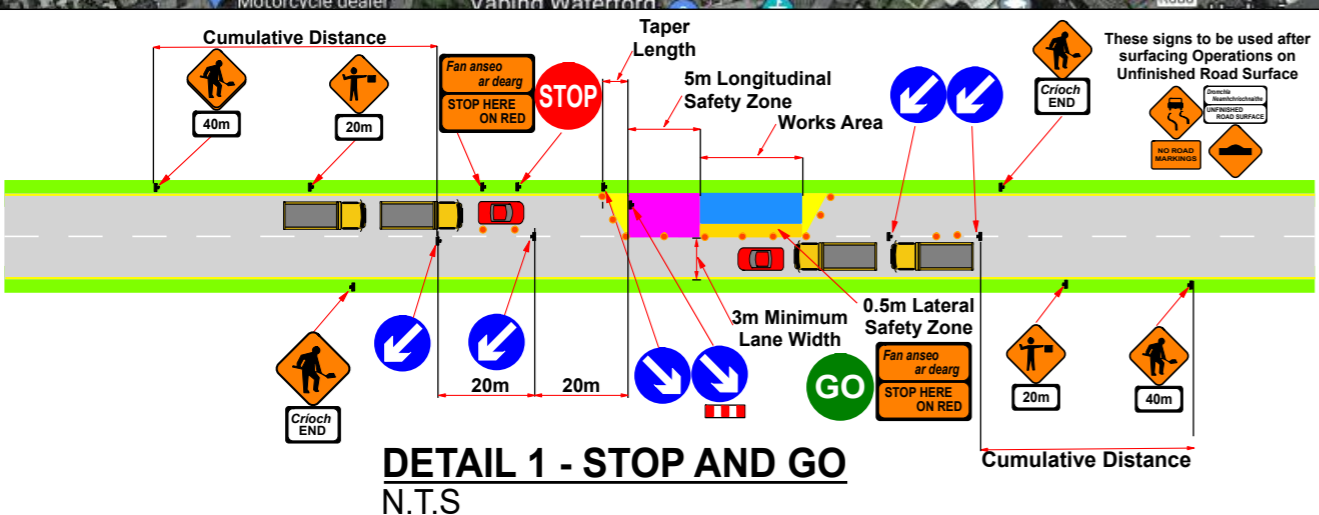
Cul-de-Sac

STREET VIEW




NOTES

- Management of pedestrians will be implemented as required on site.
- Pedestrian barrier will be used when required.
- Permanent traffic lights must not conflict with TTM and must be turned off by client.
- Tower Lights to be provided by the Main Contractor.
- Keep safety zones free from works, plant, materials and operatives.
- Where surfacing takes place the following may be used:
 *Ramps ahead 
 *Slippery road surface 
- Identify overhead electrical cables 



Client



Project **R680, Co. Waterford**

Comments **02 Section Stop and Go**

DWG No 23 101-02 006 RS	Drawn by Ranieri	Rev 00
Scale N.T.S.	Designer Irene Walsh	Date 01/08/23